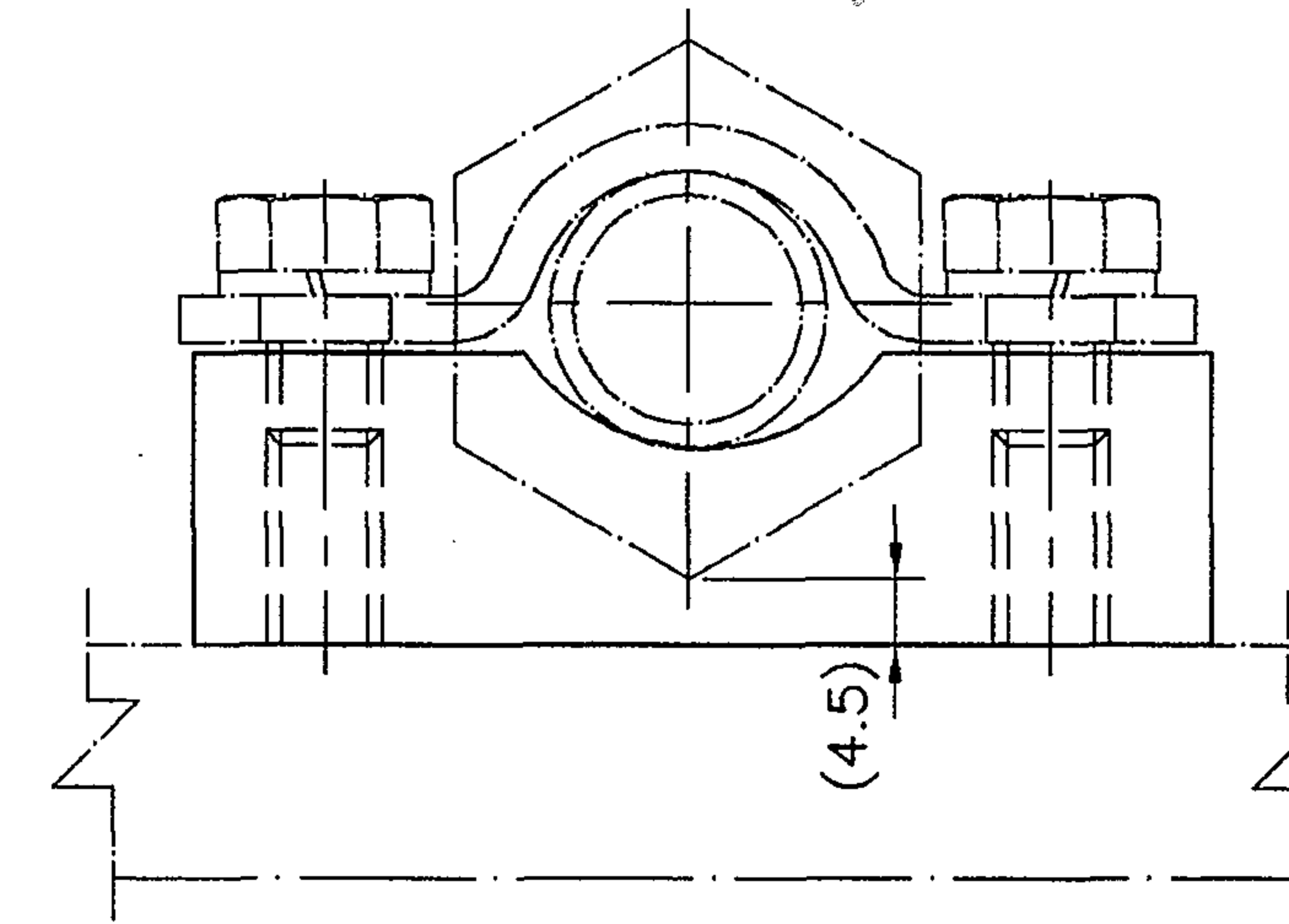
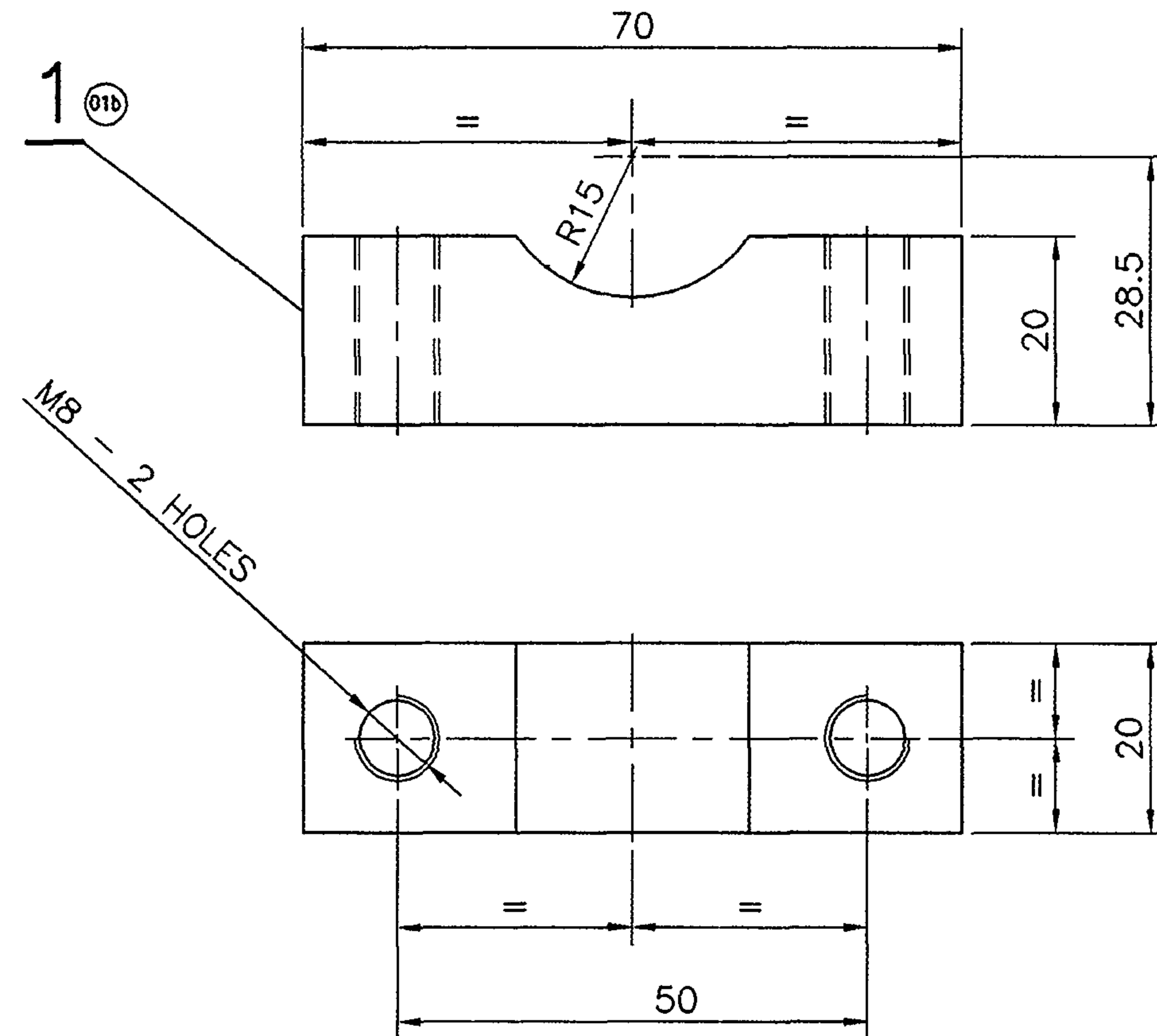


DMU/DPC<sub>5</sub>-0-3-525



VIEW WITH CLAMP

▽ ROUGH MACHINED	(01) ROUGH CLEANED
▽▽ FINISH MACHINED	(18) CHAMFERED
▽▽▽ FINE FINISH MACHINED	(01b) BURRS REMOVED

ALTERATIONS	
a	6/2006 IN COL-I QTY FOR ITEM-1 ALTD FROM 12 TO 18. -sd- 12-6-2006 SSE/D AME/D
b	5/2007 FOR ITEM-1 DIM 10R & 23.5 ALTD TO 15R & 28.5 RESPECTIVELY. QTY FOR ALL BG MAIN LINE AC & NON AC COACHES & ASSY DRG NO. GS7 -0-3-701 & WGSCWAC11-0-3-101 ADDED. ch/s SSE/D AME/D

# NOTE:

1. FOR OPEN TOLERANCES REFER DRG.NO.ICF/STD-9-0-001
2. FINISHED COMPONENTS SHALL BE THOROUGHLY CLEANED AND APPLIED WITH RUST PREVENTIVE OIL AND NEATLY PACKED TO AVOID ENTRY OF MOISTURE.

QTY. PER COACH	
ALL 20T AXLE BOGIES	18
ALL BG MAIN LINE AC & NON AC COACHES	6

				✓				SCREWING PIECE 20 x 20 x 70				1		IS:2062-99 Fe 410 WC				0.191 kg		C100111020			
				No. OFF				DESCRIPTION & DIMENSIONS				ITEM		REF.DRG		MATL. SPEC.		WEIGHT/UNIT		REMARKS			
				IV III II I				GROUP: (0-3) BOGIE FRAME ARRGT.								SUPERSEDED BY:							
								SCREWING PIECE FOR PIPE CLAMP FOR 20T AXLE BOGIES								SUPERSEDES: DMU/DPC5-0-3-525 ALT a/-							
				PER COACH												SCALE				SSE/D P. Jambavan 31/5			
																1:1				CHD M. Chendrasekaran			
																				ALT M. Sabapathynathan			
																				DRN M. Sabapathynathan			
																				ALT b			
								CAD FILE: C:\MD-CAD\199\0-3\525-SB00.DWG												INTEGRAL COACH FACTORY CHENNAI - 600 038			
								DATA CODE No: 199				INDIAN RAILWAY STANDARDS				SHEET 1 OF 1				DMU/DPC <sub>5</sub> -0-3-525			
																</							